


A New Black.

Vertex S+
Clear Black

It's clear why the Vertex S+ is the next generation of solar panel. Discerning design using dual-glass, and Trina's n type i-TOPCon technology, means that customers won't compromise on quality and style, and it's all guaranteed by our 30 year power warranty.

440 W

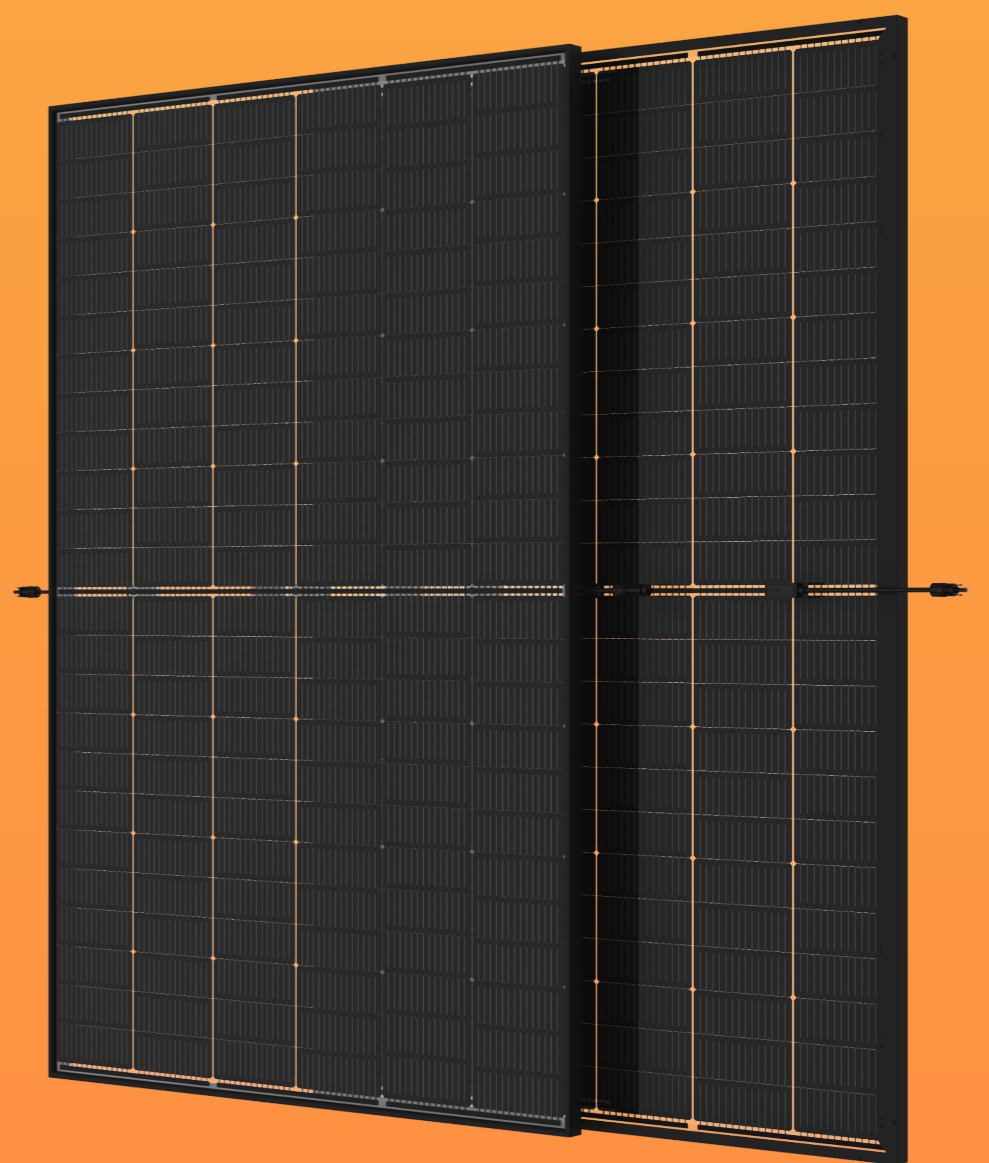
Maximum Power Output

 Dual-glass technology

22.0%

Maximum Module Efficiency

 n type i-TOPCon



A Better Black For Installation.



30 years

Power Warranty



21.0kg

Weight



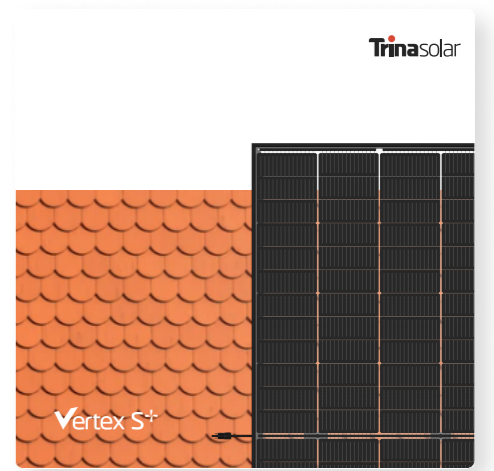
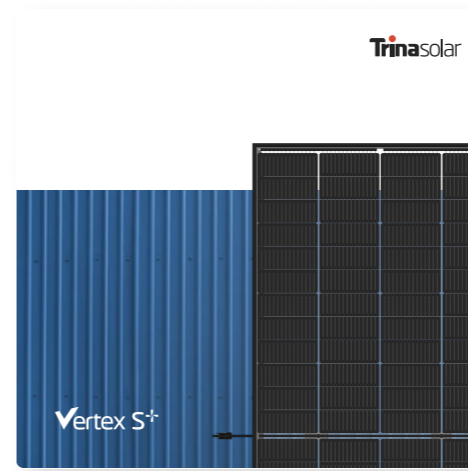
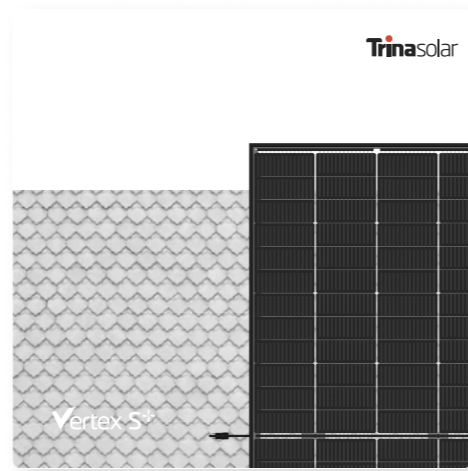
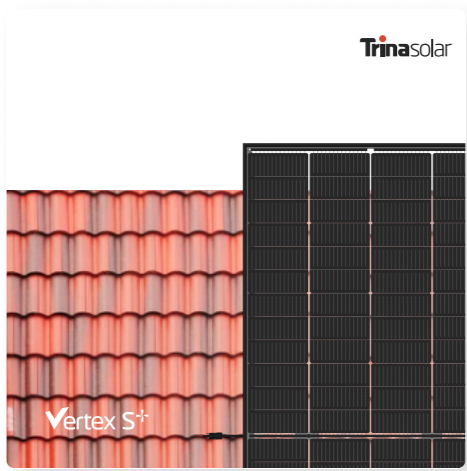
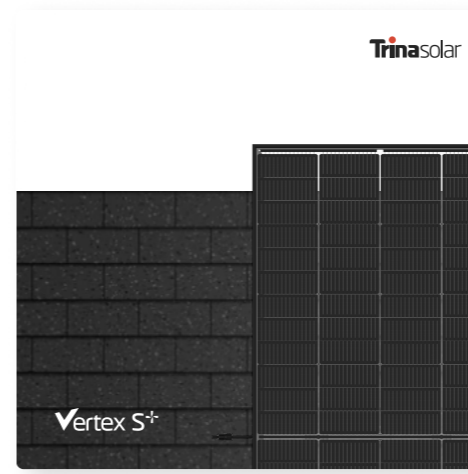
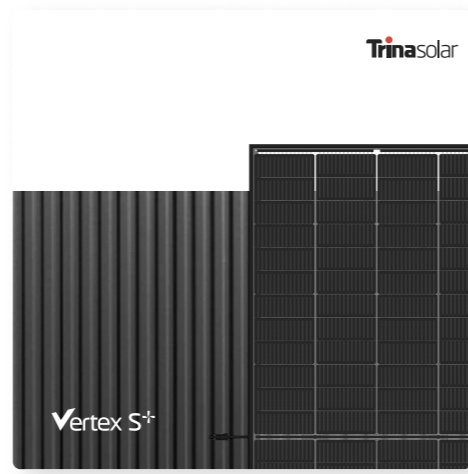
Bifacial



1.76×1.13m

Module Dimensions

Clear Black swatches.



Why it's the next generation black panel.

The Vertex S+ range all use our n type i-TOPCon cells and dual-glass which is why we offer a power warranty of 30 years. That's reassuring for everyone as it ensures they will be powering a customer's home for the next generation.

The advantages of glass.

The dual-glass on the Vertex S+ Clear Black is what helps deliver its performance and guarantee. It adds bifacial solar capture and is a more durable solution to plastic backs. Glass is also a more sustainable material for future recycling.

Ask at your local Distributor.

The Clear Black is being installed across Europe making for a better and long lasting design. Contact your distributor to learn more or [click here](#) to search for your local one.



Learn more about the **Clear Black.**

[VERTEXTPLUS.COM](https://www.vertextplus.com)

